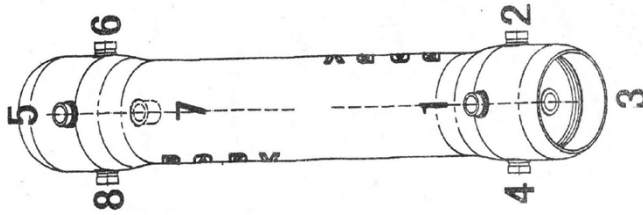


**ORDER FORM R80 SERIES (Side Port)**

Using the chart below, check the features you require and fax them with your purchase order to our customer service department.
Please note that all options will increase the vessel price or leadtime. NOTE: Missing order information will delay your order.

**MODEL & QUANTITY**

R8040B300S-3W * 16 PCS

PRESSURE☒ 300PSI ☐ 450PSI ☐ 600PSI ☐ 1000PSI ☐ 1200PSI ☐ Option - ____ PSI**SERIES**☒ B**LENGTH CODE**MODEL R8040 B 300 S ☐ -1 ☐ -2 ☒ -3 ☐ -4 ☐ -5 ☐ -6 ☐ -7 ☐ -8
(Series) (Pressure)**PAINTING COLOR**

- ☒ Standard -W: white high-gloss polyurethane coating over a smooth surface
☐ Option -B: Blue high-gloss polyurethane coating over a smooth surface
☐ Option - other colors available for orders over 50 vessels. Call for pricing details.

CERTIFICATION

- ☒ Standard - Certified by ROPV, under the ASME Code Section X, RP ,No ASME Stamp.
☐ Option - ASME Code Section X, RP stamped certified by an ASME Authorized Inspector. Call for pricing details.
☐ Option - CE (PED 97/23/EC)

FEED/CONC PORT CONFIGURATIONS

- ☒ Standard- D - 1.5" IPS Grooved (Outer Diameter 48.3mm)
☐ Option - E - 2" IPS Grooved (Outer Diameter 60.3mm)
☐ Option - F - 2.5" IPS Grooved (Outer Diameter 73mm)
☐ Option - G - 3" IPS Grooved (Outer Diameter 88.9mm)
☐ Option - I - 4" IPS Grooved (Outer Diameter 114.3mm)

Serial number end ☒ 1 ☒ D ☒ 3 ☒ D ☐ ☐
Opposite end ☒ 8 ☒ D ☒ 7 ☒ D ☐ ☐

← Port location and size should be filled here. E.g. 1D3D5D7D

PERMEATE PORT

Feed End – check one box

- ☒ Standard- 1" FNPT
☐ Option - 1.5" Victaulic Grooved
☐ Option - 1.25" M NPT
☐ Option - 1" Union Adapter
☐ Option - 1" FBSP

Opposite End – check one box

- ☒ Standard- 1" FNPT
☐ Option - 1.5" Victaulic Grooved
☐ Option - 1.25" M NPT
☐ Option - 1" Union Adapter (Outer Diameter 32mm)
☐ Option - 1" FBSP

MEMBRANE INFORMATION

Brand _____ Model _____

Note: These 2 fields are required to be completed by clients to process the order. If they are blank, we will supply standard adaptors (and other standard spare parts) that match standard membranes only.

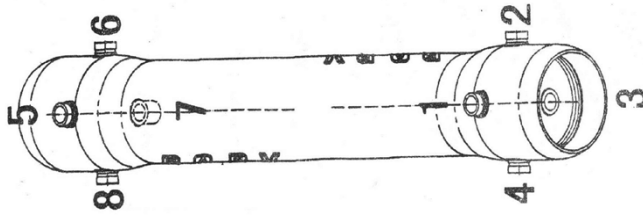
MATERIAL OF CONSTRUCTION**FEED/CONC PORT**For 300PSI and 450PSI
☒ Standard- SS 316LFor 600PSI 1000PSI and 1200PSI
☐ Standard- SDSS 2507**PERMEATE PORT**☒ Standard-ABS**Mark**☒ Standard-ROPV sticker ☐ "Made in China" sticker on products**Additional requests**

Order form completed by _____

Date: _____

**ORDER FORM R80 SERIES (Side Port)**

Using the chart below, check the features you require and fax them with your purchase order to our customer service department.
Please note that all options will increase the vessel price or leadtime. NOTE: Missing order information will delay your order.

**MODEL & QUANTITY**

R8040B300S-4W * 18 PCS

PRESSURE

☒ **300PSI** ☐ 450PSI ☐ 600PSI ☐ 1000PSI ☐ 1200PSI ☐ Option - _____ PSI

SERIES

☒ **B**

LENGTH CODE

MODEL **R8040** B 300 S ☐ -1 ☐ -2 ☐ -3 ☒ **-4** ☐ -5 ☐ -6 ☐ -7 ☐ -8
(Series) (Pressure)

PAINTING COLOR

- ☒ Standard -W: white high-gloss polyurethane coating over a smooth surface
☐ Option -B: Blue high-gloss polyurethane coating over a smooth surface
☐ Option - other colors available for orders over 50 vessels. Call for pricing details.

CERTIFICATION

- ☒ Standard - Certified by ROPV, under the ASME Code Section X, RP ,No ASME Stamp.
☐ Option - ASME Code Section X, RP stamped certified by an ASME Authorized Inspector. Call for pricing details.
☐ Option - CE (PED 97/23/EC)

FEED/CONC PORT CONFIGURATIONS

☐ Standard- D - 1.5" IPS Grooved (Outer Diameter 48.3mm)

☒ Option - E - 2" IPS Grooved (Outer Diameter 60.3mm)

☐ Option - F - 2.5" IPS Grooved (Outer Diameter 73mm)

☐ Option - G - 3" IPS Grooved (Outer Diameter 88.9mm)

☐ Option - I - 4" IPS Grooved (Outer Diameter 114.3mm)

Serial number end ☒ **1** ☒ **E** ☒ **3** ☒ **E** ☐ **0** ☐

Opposite end ☒ **8** ☒ **E** ☒ **7** ☒ **E** ☐ **0** ☐

← Port location and size should be filled here. E.g. 1D3D5D7D

PERMEATE PORT

Feed End – check one box

- ☒ Standard- 1" FNPT
☐ Option - 1.5" Victaulic Grooved
☐ Option - 1.25" M NPT
☐ Option - 1" Union Adapter
☐ Option - 1" FBSP

Opposite End – check one box

- ☒ Standard- 1" FNPT
☐ Option - 1.5" Victaulic Grooved
☐ Option - 1.25" M NPT
☐ Option - 1" Union Adapter (Outer Diameter 32mm)
☐ Option - 1" FBSP

MEMBRANE INFORMATION

Brand _____ Model _____

Note: These 2 fields are required to be completed by clients to process the order. If they are blank, we will supply standard adaptors (and other standard spare parts) that match standard membranes only.

MATERIAL OF CONSTRUCTION**FEED/CONC PORT**

For 300PSI and 450PSI
☒ Standard- SS 316L

For 600PSI 1000PSI and 1200PSI
☐ Standard- SDSS 2507

PERMEATE PORT

☒ Standard-ABS

Mark

☒ Standard-ROPV sticker ☐ "Made in China" sticker on produtes

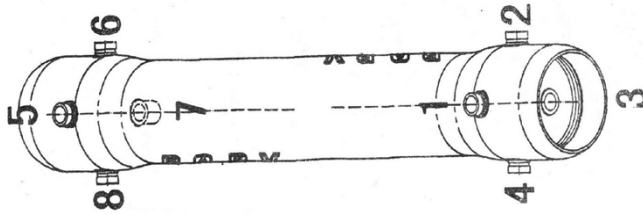
Additional requests

Order form completed by _____

Date: _____

**ORDER FORM R80 SERIES (Side Port)**

Using the chart below, check the features you require and fax them with your purchase order to our customer service department.
Please note that all options will increase the vessel price or leadtime. NOTE: Missing order information will delay your order.

**MODEL & QUANTITY**

R8040B300S-4W * 24 PCS

PRESSURE

☒ **300PSI** ☐ 450PSI ☐ 600PSI ☐ 1000PSI ☐ 1200PSI ☐ Option - _____ PSI

SERIES

☒ **B**

LENGTH CODE

MODEL **R8040** B 300 S ☐ -1 ☐ -2 ☐ -3 ☐ -4 ☒ -5 ☐ -6 ☐ -7 ☐ -8
(Series) (Pressure)

PAINTING COLOR

- ☒ Standard -W: white high-gloss polyurethane coating over a smooth surface
☐ Option -B: Blue high-gloss polyurethane coating over a smooth surface
☐ Option - other colors available for orders over 50 vessels. Call for pricing details.

CERTIFICATION

- ☒ Standard - Certified by ROPV, under the ASME Code Section X, RP ,No ASME Stamp.
☐ Option - ASME Code Section X, RP stamped certified by an ASME Authorized Inspector. Call for pricing details.
☐ Option - CE (PED 97/23/EC)

FEED/CONC PORT CONFIGURATIONS

☐ Standard- D - 1.5" IPS Grooved (Outer Diameter 48.3mm)

☒ Option - E - 2" IPS Grooved (Outer Diameter 60.3mm)

☐ Option - F - 2.5" IPS Grooved (Outer Diameter 73mm)

☐ Option - G - 3" IPS Grooved (Outer Diameter 88.9mm)

☐ Option - I - 4" IPS Grooved (Outer Diameter 114.3mm)

Serial number end ☒ 1 ☒ E ☒ 3 ☒ E ☐ 0 ☐

Opposite end ☒ 8 ☒ E ☒ 7 ☒ E ☐ 0 ☐

← Port location and size should be filled here. E.g. 1D3D5D7D

PERMEATE PORT

Feed End – check one box

- ☒ Standard- 1" FNPT
☐ Option - 1.5" Victaulic Grooved
☐ Option - 1.25" M NPT
☐ Option - 1" Union Adapter
☐ Option - 1" FBSP

Opposite End – check one box

- ☒ Standard- 1" FNPT
☐ Option - 1.5" Victaulic Grooved
☐ Option - 1.25" M NPT
☐ Option - 1" Union Adapter (Outer Diameter 32mm)
☐ Option - 1" FBSP

MEMBRANE INFORMATION

Brand _____ Model _____

Note: These 2 fields are required to be completed by clients to process the order. If they are blank, we will supply standard adaptors (and other standard spare parts) that match standard membranes only.

MATERIAL OF CONSTRUCTION**FEED/CONC PORT**

For 300PSI and 450PSI
☒ Standard- SS 316L

For 600PSI 1000PSI and 1200PSI
☐ Standard- SDSS 2507

PERMEATE PORT

☒ Standard-ABS

Mark

☒ Standard-ROPV sticker ☐ "Made in China" sticker on produtes

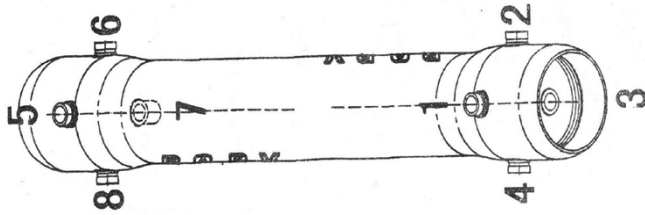
Additional requests

Order form completed by _____

Date: _____

**ORDER FORM R80 SERIES (Side Port)**

Using the chart below, check the features you require and fax them with your purchase order to our customer service department.
Please note that all options will increase the vessel price or leadtime. NOTE: Missing order information will delay your order.

**MODEL & QUANTITY**

R8040B300S-6W * 30 PCS

PRESSURE

☒ 300PSI ☐ 450PSI ☐ 600PSI ☐ 1000PSI ☐ 1200PSI ☐ Option - ____ PSI

SERIES

☒ B

LENGTH CODE

MODEL R8040 B 300 S ☐ -1 ☐ -2 ☐ -3 ☐ -4 ☐ -5 ☒ -6 ☐ -7 ☐ -8
(Series) (Pressure)

PAINTING COLOR

- ☒ Standard -W: white high-gloss polyurethane coating over a smooth surface
☐ Option -B: Blue high-gloss polyurethane coating over a smooth surface
☐ Option - other colors available for orders over 50 vessels. Call for pricing details.

CERTIFICATION

- ☒ Standard - Certified by ROPV, under the ASME Code Section X, RP ,No ASME Stamp.
☐ Option - ASME Code Section X, RP stamped certified by an ASME Authorized Inspector. Call for pricing details.
☐ Option - CE (PED 97/23/EC)

FEED/CONC PORT CONFIGURATIONS

- ☐ Standard- D - 1.5" IPS Grooved (Outer Diameter 48.3mm)
☐ Option - E - 2" IPS Grooved (Outer Diameter 60.3mm)
☒ Option - F - 2.5" IPS Grooved (Outer Diameter 73mm)
☐ Option - G - 3" IPS Grooved (Outer Diameter 88.9mm)
☐ Option - I - 4" IPS Grooved (Outer Diameter 114.3mm)

Serial number end ☒ 1 ☒ F ☒ 3 ☒ F ☐ 0 ☐
Opposite end ☒ 8 ☒ F ☒ 7 ☒ F ☐ ☐

Port location and size should be filled here. E.g. 1D3D5D7D

PERMEATE PORT

Feed End – check one box

- ☒ Standard- 1" FNPT
☐ Option - 1.5" Victaulic Grooved
☐ Option - 1.25" M NPT
☐ Option - 1" Union Adapter
☐ Option - 1" FBSP

Opposite End – check one box

- ☒ Standard- 1" FNPT
☐ Option - 1.5" Victaulic Grooved
☐ Option - 1.25" M NPT
☐ Option - 1" Union Adapter (Outer Diameter 32mm)
☐ Option - 1" FBSP

MEMBRANE INFORMATION

Brand _____ Model _____

Note: These 2 fields are required to be completed by clients to process the order. If they are blank, we will supply standard adaptors (and other standard spare parts) that match standard membranes only.

MATERIAL OF CONSTRUCTION**FEED/CONC PORT**

For 300PSI and 450PSI
☒ Standard- SS 316L

For 600PSI 1000PSI and 1200PSI
☐ Standard- SDSS 2507

PERMEATE PORT

☒ Standard-ABS

Mark

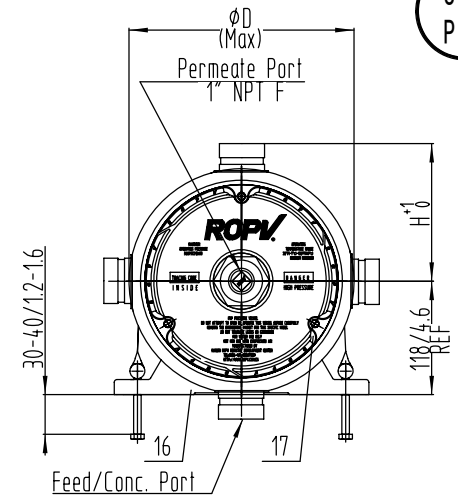
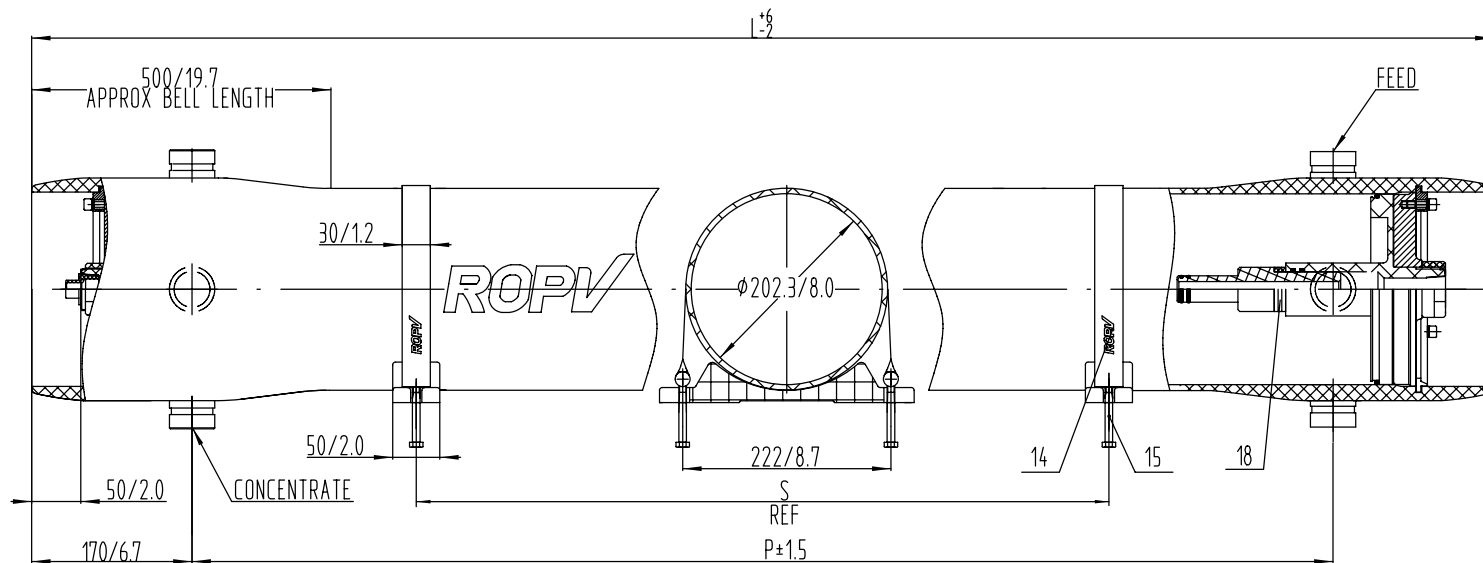
☒ Standard-ROPV sticker ☐ "Made in China" sticker on produtes

Additional requests

Order form completed by _____

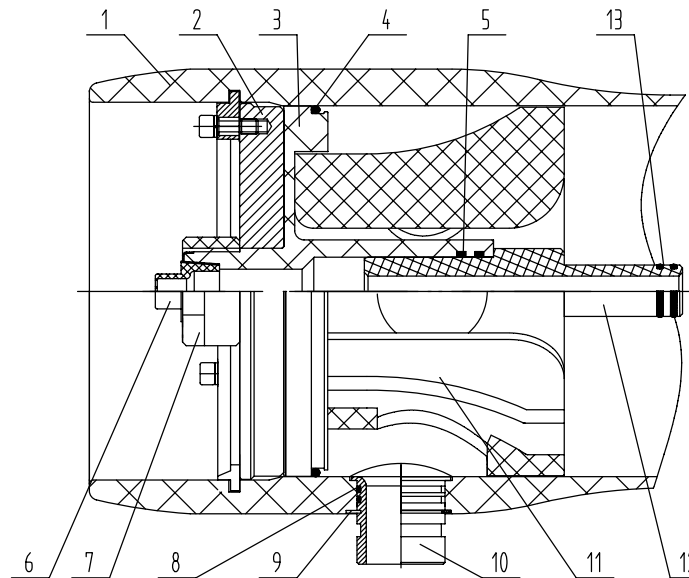
Date: _____

300
PSI



F/C PORT	D(MM/IN)	H(MM/IN)
1.5"(DN40)	244/9.6	148/5.8
2"(DN50)	248/9.7	148/5.8
2.5"(DN65)	258/10.1	153/6.0

- DESIGN PRESSURE 300PSI(2.1MPa).
- DESIGN TEMPERATURE 150°F(66°C).
- MIN ALLOWABLE TEMPERATURE 20°F(-7°C).
- WORKING MEDIUM, WATER pH RANGE 3-11.
- DIMENSIONS IN MM(INCHES) APPROX.
- INTERNAL PERMEATE PRESSURE NOT TO EXCEED 125PSI(0.88MPa).
- THE QUANTITY OF ITEM NO.8, 9 AND 10, DEPEND ON THE FEED/CONC. PORTS CONFIGURATION.
- ITEM 11 CONCENTRATE SIDE ONLY.
- ITEM 18 FEED SIDE ONLY.
- PLEASE OPERATE IN ACCORDANCE WITH USER MANUAL.
- FOR REFERENCE ONLY, NOT FOR CONSTRUCTION UNLESS CERTIFIED.
- SPARE PARTS FORM JUST FOR REFERENCE, SPECIFIC FORM OF THE SPARE PART DRAWING PREVAIL, SUBJECT TO CHANGE WITHOUT NOTICE.
- ALL PARTS CAN BE RECYCLED EXCEPT FRP SHELL.

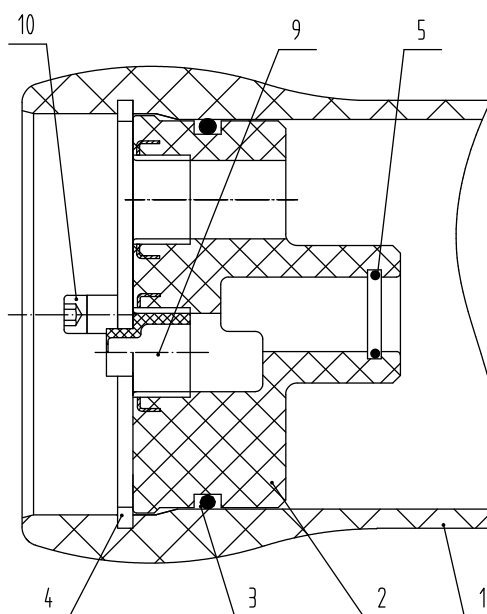
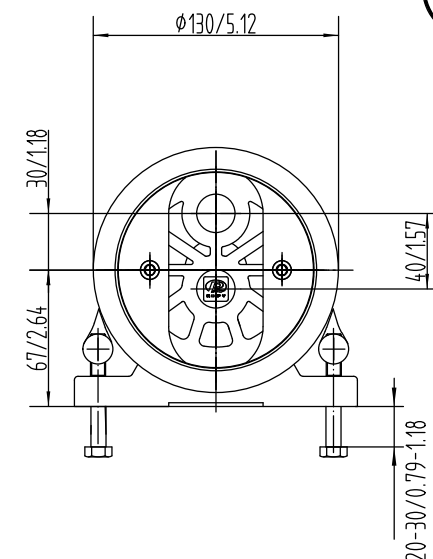
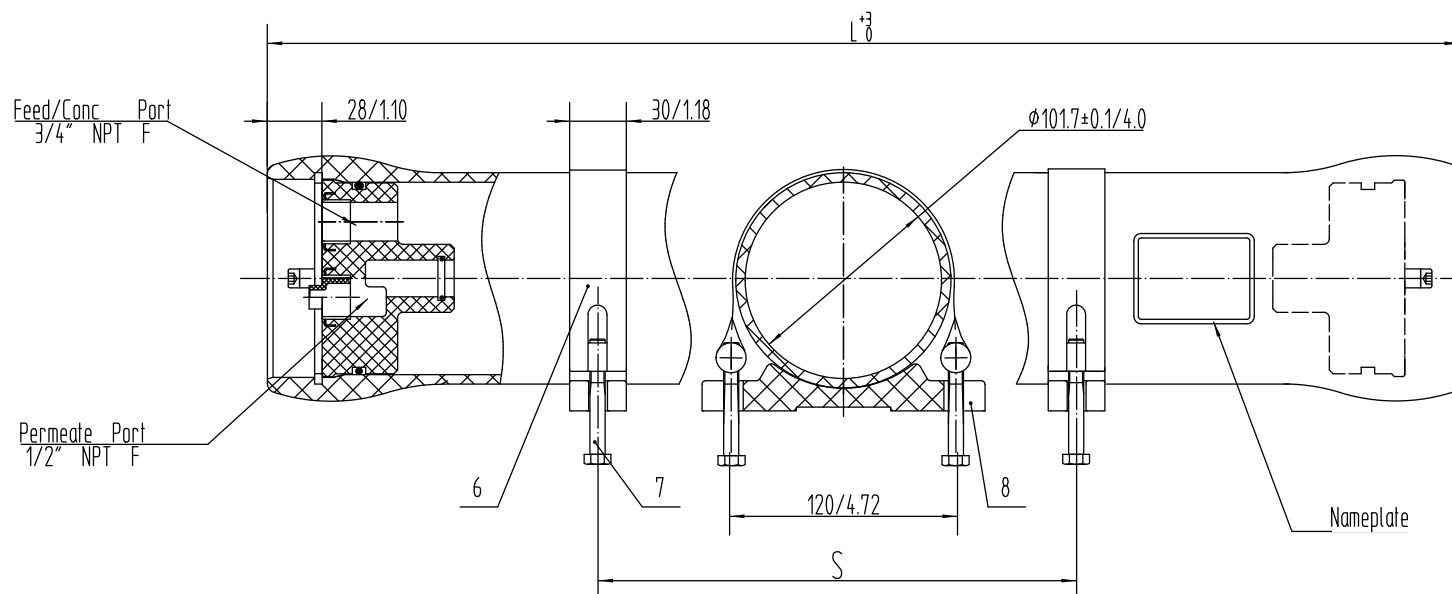


Shell length code	Shell number	L L.O.A MM/IN	P Port to port MM/IN	S Span MM/IN	Approx assembly weight (1.5"Feed/Conc. Port) KG/LB
1	S8012.1	1534/60.4	1194/47	500/19.7	32/71
2	S8012.2	2550/100.4	2210/87	1455/57.3	39/86
3	S8012.3	3566/140.4	3226/127	2064/81.3	46/101
4	S8012.4	4582/180.4	4242/167	1600/63x2	53/117
5	S8012.5	5598/220.4	5258/207	2000/78.7x2	60/132
6	S8012.6	6614/260.4	6274/247	2358/92.8x2	67/148
7	S8012.7	7630/300.4	7290/287	2865/112.8x2	74/163
8	S8012.8	8646/340.4	8306/327	3373/132.8x2	81/179

DESIGN	Harbin ROPV Industry Development Center		
	REVIEW	MODEL	R8040B300S PRESSURE VESSEL
	APPROVAL	DRG	REV
		R8040B300S-00	10.2.3

18	A8023.1	Shim	0~3	Engineering Thermoplastic	
17	A8018.4	Locking Kit Segment Assy	6	304SS including Screw and Spring Pad	
16	A8016	Saddle	2~3	Rubber	
15	GB/T5782 M8x90	Strap Screw	4~6	304SS	
14	A8014.1	Strap	2~3	304SS-Brass and Rubber	
13	23.6x2.65G GB/T3452.1	O-ring	4	EPDM	
12	A8012.1	Adapter	2	Engineering Thermoplastic	
11	A8011.1	Thrust Ring	1	Engineering Thermoplastic	
10	S8030F(DZ)	2.5"Feed/Conc. Port			
	S8030E(DZ)	2"Feed/Conc. Port	2~4	316LSS	OPT
	S8045D(DZ)	1.5"Feed/Conc. Port			
09	A8009.1-3	Retaining Ring	2~4	304SS	
08	69(65)x3.55G GB/T3452.1	O-ring			
	54.5x2.65G GB/T3452.1		4~8	EPDM	
	42.5x2.65G GB/T3452.1				
07	A8007	Permeate Port Locknut	2	Engineering Thermoplastic	
06	A8006	Plug	1	Engineering Thermoplastic	
05	36.5x3.55G GB/T3452.1	O-ring	4	EPDM	
04	190x5.3G GB/T3452.1	O-ring	2	EPDM	
03	A8003.4	Sealing Plate	2	Engineering Thermoplastic; 304SS ring	
02	A8002.3	Bearing Plate	2	Aluminium Alloy-Hard anodized	ASME
	A8002.2				
01	S8012.1-8	Pressure Shell	1	FRP	
REF	PART NUMBER	DESCRIPTION	QTY	MATERIAL	NOTE

300
PSI



- 1 DESIGN PRESSURE 300PSI(2.1MPa).
- 2 DESIGN TEMPERATURE 150°F(66°C).
- 3 MIN ALLOWABLE TEMPERATURE 20°F(-7°C).
- 4 WORKING MEDIUM, WATER PH3-11.
- 5 DIMENSIONS IN MM(INCHES APPROX).
- 6 INTERNAL PERMEATE PRESSURE NOT TO EXCEED 125PSI(0.88Mpa).
- 7 PLEASE OPERATE IN ACCORDANCE WITH USER MANUAL.
- 8 FOR REFERENCE ONLY,NOT FOR CONSTRUCTION UNLESS CERTIFIED.
- 9 SPARE PARTS FORM JUST FOR REFERENCE,SPECIFIC FORM OF THE SPARE PART DRAWING PREVAIL,SUBJECT TO CHANGE WITHOUT NOTICE.
- 10 ALL PARTS CAN BE RECYCLED EXCEPT FRP SHELL.

Ref.	Part Number	Description	Qty.	Material	Note
1	4098.7	Pressure Shell	1	Epoxy FRP	
2	4099.1Z	End Plug	2	ABS	1/2"×3/4"NPT F
3	4002	O-Ring	2	EPDM	90×5.3
4	4011	Locking Crescent	4	304SS	
5	4007	O-Ring	2	EPDM	19×2.65
6	4008	Strap	2	304SS	
7	4009	Bolt For Strap	4	304SS	M8×60
8	4010	Saddle	2	Rubber	
9	4013.1	Plug	1	ABS	1/2"NPT M
10	4012	Screw of locking crescent	4	304SS	M6×20

Shell length code	Shell number	L.O.A MM/IN	Span MM/IN	Approx assembly weight KG/LB
40	4098.7	1163/45.8	600/23.6	6.6/14.9
ROPV		Design	Harbin ROPV	
		Review	Industry Development Center	
		Approve	Title	R40A300E PRESSURE VESSEL
			Dwg. No.	R40A300E-00
			Rev.	A1